

# Bowsland Green Primary School

## Covid Outbreak Contingency Plan – Sept. 2021



When should my child self-isolate or miss school?



NO

- All children **MUST** attend school unless they are ill.
- From 16<sup>th</sup> August 2021, children under 18 (or double-vaccinated adults) do not need to self-isolate or miss school if a member of their household or a contact, has Covid.
- Instead, they will need to book a PCR test but can continue coming to school so long as they have no symptoms and the test result is negative.



YES

- If your child develops Covid symptoms at home, they should stay at home and should book a PCR test), NOT a Lateral Flow test.
- If your child develops Covid symptoms at school, they will be sent home and you should book them a PCR test.
- If your child tests positive for Covid, they will need to self-isolate. The rest of the household does not need to self-isolate if they are under 18 or fully vaccinated – but instead should book a PCR test.

Community Covid Risk

Description

Actions



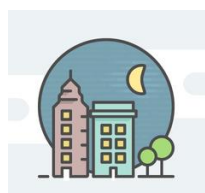
Low Community Transmission. No School Cases.

- There have been no cases of Covid within school for 10 school days.
- Cases of Covid locally are low and/ or stable.
- Hospitalisation/ Deaths due to Covid nationally are low.

No Covid measures are necessary beyond:




- Reminding children of good hand-hygiene.
- Ensuring good ventilation encouraged where practical.
- Ensuring Children / Staff to stay at home if they have Covid Symptoms (and to book a PCR test).

**Staff will continue to test themselves using Lateral flow tests until the end of September.**



Rapidly Rising Community Transmission

- No current Covid cases have been recorded at school, but...
- Cases of Covid are rising rapidly in the community causing disruption to other local schools.
- S Glos Public Health / Public Health England issue warnings of expected local/ national infection wave
- Ventilation of classrooms increased & hand-washing supervised.
- Large indoor public performance audience numbers reduced.
- Staff-room capacity is reduced.
- Whole-school assemblies are replaced with Key Stage assemblies.
- Clinically Extremely Vulnerable staff meet with Line-Managers to review their individual risk assessment & discuss additional protection (e.g. use of face coverings)
- Children don't move classrooms for wider curriculum lessons, for example computing.

Number of Cases:	Description:	Actions:
 <p><b>A single child tests Positive</b></p>	<ul style="list-style-type: none"> <li>• A single child tests positive for Covid in a class.</li> <li>• There are fewer than 5 cases in the class.</li> <li>• No other year groups are affected.</li> </ul>	<ul style="list-style-type: none"> <li>• The child self-isolates for 10 days. Remote learning will be provided if they are well enough to complete it as outlined on the website or work packs are sent home <a href="https://www.bowland.org.uk/remote-learning-our-offer/">https://www.bowland.org.uk/remote-learning-our-offer/</a></li> <li>• The parents of the child are contacted directly by NHS Track and Trace to establish likely contacts.</li> <li>• Likely contacts will be contacted by NHS Track &amp; Trace and advised to book at PCR Test. The school will contact parents to advise this if close contacts are known.</li> <li>• <b>Children do not need to miss school or self-isolate whilst they wait for the result of the PCR test unless they have Covid Symptoms.</b></li> </ul>
 <p><b>5 children or staff within a class test positive within 10 days of each other.</b></p>	<ul style="list-style-type: none"> <li>• There have been 5 cases of Covid across a class within 10 days which could mean that Covid is spreading within that group of children.</li> </ul>	<ul style="list-style-type: none"> <li>• <b>As above for each positive case.</b></li> <li>• The school will discuss the outbreak with South Gloucestershire Public Health / Public Health England and agree strengthening protective measures <u>for 10 school days</u>, including: <ul style="list-style-type: none"> <li>○ Encouraging the use of face masks in corridors and communal areas</li> <li>○ Adapting, Limiting or postponing indoor sporting events, trips, open days and performances.</li> <li>○ Reverting to Key Stage Assemblies.</li> <li>○ Reducing the amount of classes staff work across.</li> <li>○ Resuming twice-weekly Staff Lateral flow testing.</li> </ul> </li> </ul>
 <p><b>Covid cases continue to increase rapidly within a 10 day period.</b></p>	<ul style="list-style-type: none"> <li>• Despite the measures indicated above, Covid cases within the school continue to rise within a 10 day period with multiple classes and staff affected, suggesting that Covid is spreading widely throughout the school.</li> </ul>	<ul style="list-style-type: none"> <li>• Incident Management Team meeting held between the school and South Gloucestershire Public Health to agree further measures, <u>for a further 10 school days</u>, including: <ul style="list-style-type: none"> <li>○ Re-introducing class bubbles.</li> <li>○ Reverting to class-based school lunches.</li> <li>○ Limiting all non-essential visitors to school.</li> <li>○ Postponing all non-essential events.</li> <li>○ <b>Re-introducing remote learning for individual classes for 10 school days considered, as outlined on the school website.</b></li> </ul> </li> </ul>

The school will inform parents of any changes to Covid measures should these be needed.